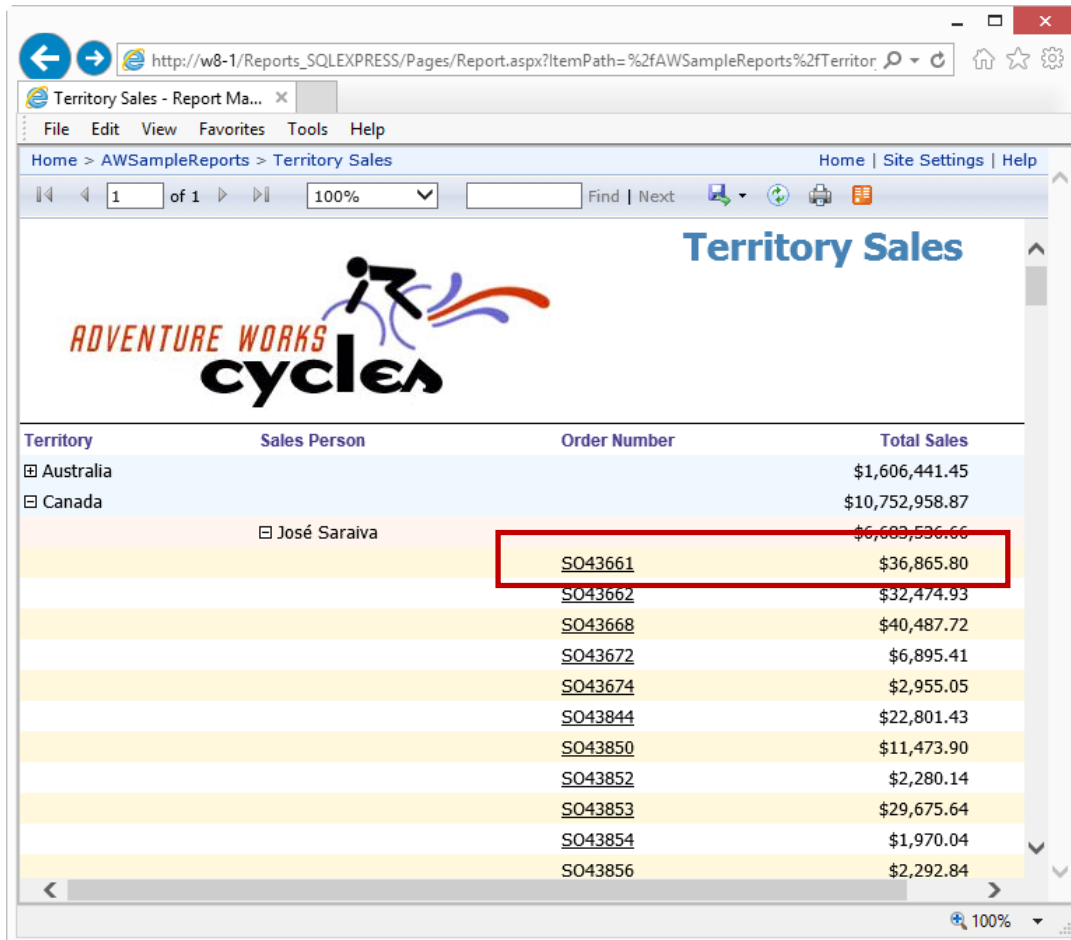


# Accounting for the difference between Order Total amounts

When you run the Territory Sales report, you can expand the territory and the sales person. You will see a list of the Order Numbers for the sales person, along with the Total Sales amount for the order.

Figure 1 shows an example of the report. In this example, Order Number **SO43661** with a Total Sales amount of **\$36,865.80** will be used.

Click the **Order Number**. You will go to the Sales Order Detail report shown in Figure 2.



Territory	Sales Person	Order Number	Total Sales
Australia			\$1,606,441.45
Canada			\$10,752,958.87
	José Saraiva		\$6,683,536.66
		SO43661	\$36,865.80
		SO43662	\$32,474.93
		SO43668	\$40,487.72
		SO43672	\$6,895.41
		SO43674	\$2,955.05
		SO43844	\$22,801.43
		SO43850	\$11,473.90
		SO43852	\$2,280.14
		SO43853	\$29,675.64
		SO43854	\$1,970.04
		SO43856	\$2,292.84

Figure 1: This is the Territory Sales report. Note the Total Sales amount for Order Number SO43661 (\$36,865.80). ssrsoth001

In the Sales Order Detail report, you can see that the order number is s043661, the same order number that was displayed on the Territory Sales report.

However, the total shown for this order (lower right corner) is \$32,726.48. The amount shown on the Sales Order Detail report is \$4139.32 less than the amount shown on the Territory Sales report.

**ADVENTURE WORKS cycles**

**Sales Order**  
Order # S043661

**Bill To:** Original Bicycle Supply Company  
2573 Dufferin Street  
Toronto Ontario  
M4B 1V5  
Canada

**Ship To:** Original Bicycle Supply Company  
2573 Dufferin Street  
Toronto Ontario  
M4B 1V5  
Canada

**Contact:** Jauna Elson  
Ph: 185-555-0190

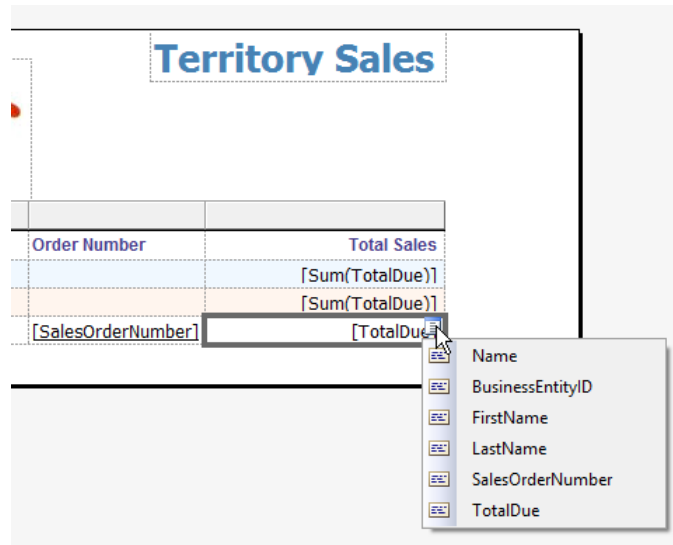
Date	Order Date	Sales Person	Purchase Order	Shipment Method
6/23/2015	7/1/2005	José Saraiva, Sales Representative	PO18473189620	CARGO TRANSPORT 5

Line	Qty	Item Number	Description	Tracking #	Unit Price	Subtotal	Discount	Item Total
1	1	FR-M94B-48	HL Mountain Frame - Black, 48	4E0A-4F89-AE	\$809.76	\$809.76	\$0.00	\$809.76
2	1	FR-M94B-42	HL Mountain Frame - Black, 42	4E0A-4F89-AE	\$714.70	\$714.70	\$0.00	\$714.70
3	2	FR-M94B-38	HL Mountain Frame - Black, 38	4E0A-4F89-AE	\$714.70	\$1,429.41	\$0.00	\$1,429.41
4	4	CA-1098	AWC Logo Cap	4E0A-4F89-AE	\$5.19	\$20.75	\$0.00	\$20.75
5	4	LJ-0192-L	Long-Sleeve Logo Jersey, L	4E0A-4F89-AE	\$28.84	\$115.36	\$0.00	\$115.36
6	2	FR-M94S-46	HL Mountain Frame - Silver, 46	4E0A-4F89-AE	\$722.59	\$1,445.19	\$0.00	\$1,445.19
7	3	BK-M82B-38	Mountain-100 Black, 38	4E0A-4F89-AE	\$2,024.99	\$6,074.98	\$0.00	\$6,074.98
8	2	BK-M82B-48	Mountain-100 Black, 48	4E0A-4F89-AE	\$2,024.99	\$4,049.99	\$0.00	\$4,049.99
9	2	HL-U509-B	Sport-100 Helmet, Blue	4E0A-4F89-AE	\$20.19	\$40.37	\$0.00	\$40.37
10	2	FR-M94S-52	HL Mountain Frame - Silver, 48	4E0A-4F89-AE	\$818.70	\$1,637.40	\$0.00	\$1,637.40
11	4	BK-M82B-42	Mountain-100 Black, 42	4E0A-4F89-AE	\$2,024.99	\$8,099.98	\$0.00	\$8,099.98
12	2	BK-M82S-44	Mountain-100 Silver, 44	4E0A-4F89-AE	\$2,039.99	\$4,079.99	\$0.00	\$4,079.99
13	2	LJ-0192-X	Long-Sleeve Logo Jersey, XL	4E0A-4F89-AE	\$28.84	\$57.68	\$0.00	\$57.68
14	2	BK-M82B-44	Mountain-100 Black, 44	4E0A-4F89-AE	\$2,024.99	\$4,049.99	\$0.00	\$4,049.99
15	5	HL-U509	Sport-100 Helmet, Black	4E0A-4F89-AE	\$20.19	\$100.93	\$0.00	\$100.93
<b>Total Discount: \$0.00</b>							<b>Total:</b>	<b>\$32,726.48</b>

Figure 2: When you click through to the Sales Order Detail report, the total is shown as \$32,726.48. ssrsoth002

To see why there is a difference in the totals, we will look at how the Territory Sales report works with the data.

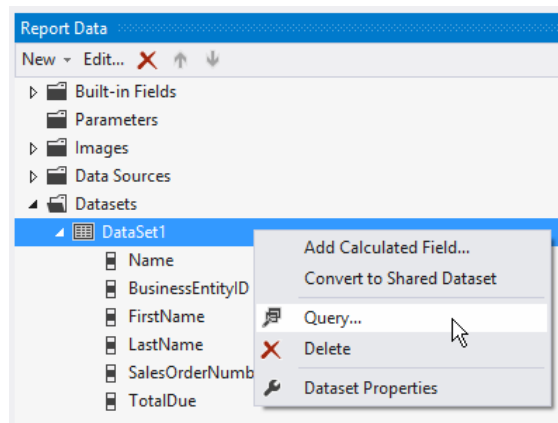
Start with the Territory Sales report in Design view. As shown in Figure 3, the `TotalDue` column is used to display the total for the sales order. In the figure, you can see the list of columns that are available in the dataset. Note that `TotalDue` is a column in the dataset, it is not an expression (in other words, the total that is displayed is not calculated in an expression, it is the column value straight out of the dataset).



ssrsoth005

Figure 3: The `TotalDue` value is used in the Territory Sale report to show the total for each order.

Now we will look at the query that is used to produce the dataset. Still in design view for the Territory Sales report, in the Report Data panel, right-click the `DataSet1` item and select the Query item from the pop-up menu, as shown in Figure 4. (Note: the dataset name might be something other than `DataSet1`.)



ssrsoth011

Figure 4: Right-click the `DataSet1` item, select Query from the pop-up menu.

The Query Designer is shown. Add the following WHERE clause, as shown in Figure 5, and click the **Run** button (the red exclamation character) to run the query.

```
WHERE SOH.SalesOrderNumber = 'S043661'
```

When you run the query for that sales order number, you will see the TotalDue column value of 36865.8012, as shown in the figure. That is the value that is displayed on the Territory Sales report.

The value on the report is formatted using the c2 numeric format code, to format the amount as a currency amount with two decimal positions. The value displayed on the report is \$36,865.80.

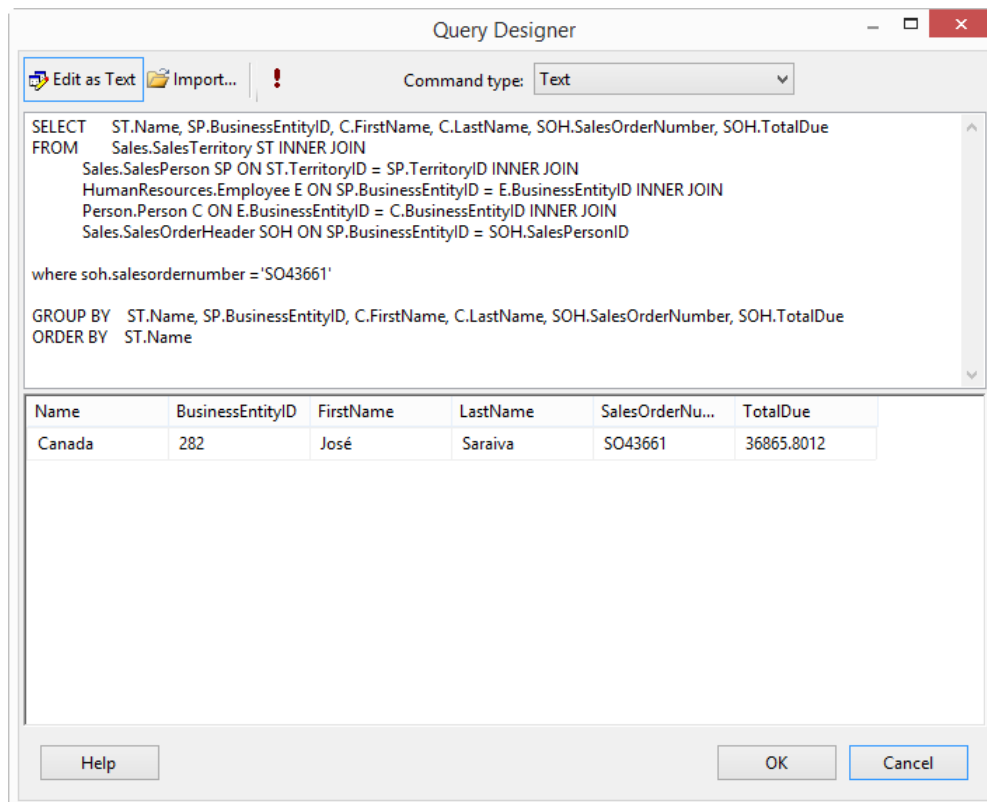


Figure 5: This shows the results of running the SELECT statement for sales order number S043661. The TotalDue value is 36865.8012. ssrsoth013

We now know that the amount that is displayed on the Territory Sales report is the value that is in the table sales.salesorderheader, column TotalDue.

We will now look at the definition of the sales.salesorderheader table in the Adventureworks2008R2 database.

Go to the SQL Server Management Studio. In the Object Explorer, expand the Adventureworks2008R2 database, then expand **Tables**, then expand **Columns** under the sales.salesorderheader table. You should see the list of columns as shown in Figure 6.

Note that the TotalDue column is defined as

**(Computed, money, not null)**

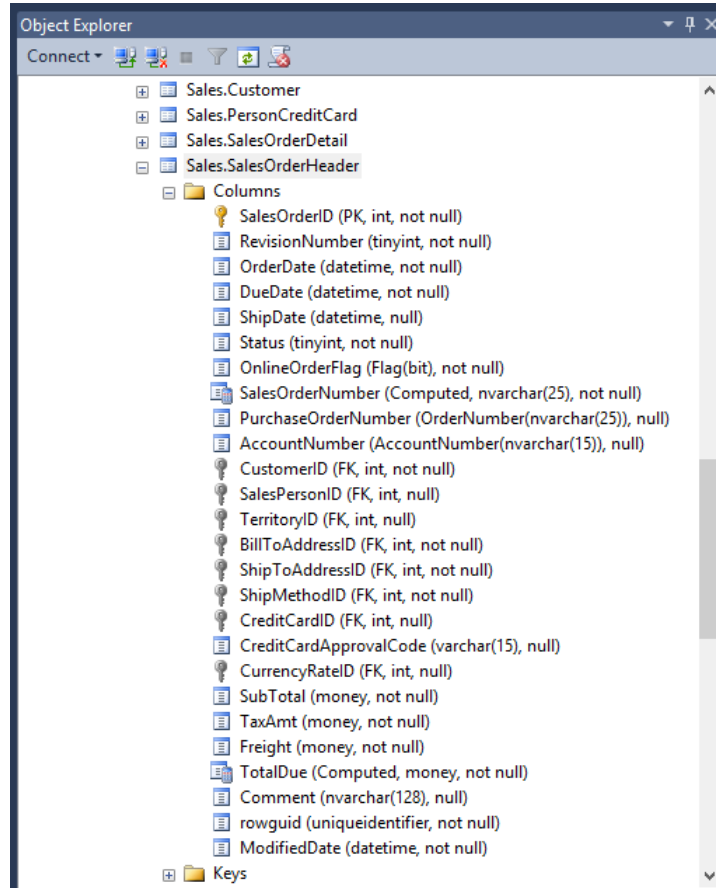
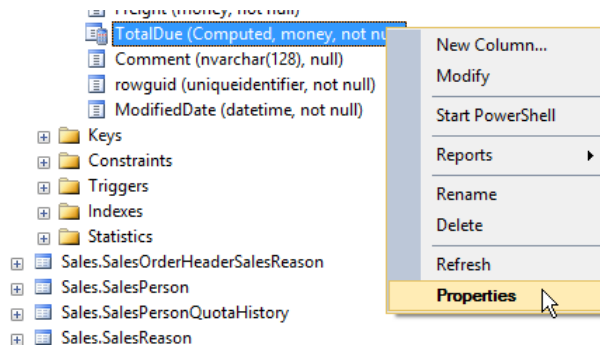


Figure 6: This is the list of columns in the Sales.SalesOrderHeader table. Note that the TotalDue column is defined as a Computed column.

ssrs021

In the Object Explorer, right-click the TotalDue column. Select the **Properties** item from the pop-up menu, as shown in Figure 7.

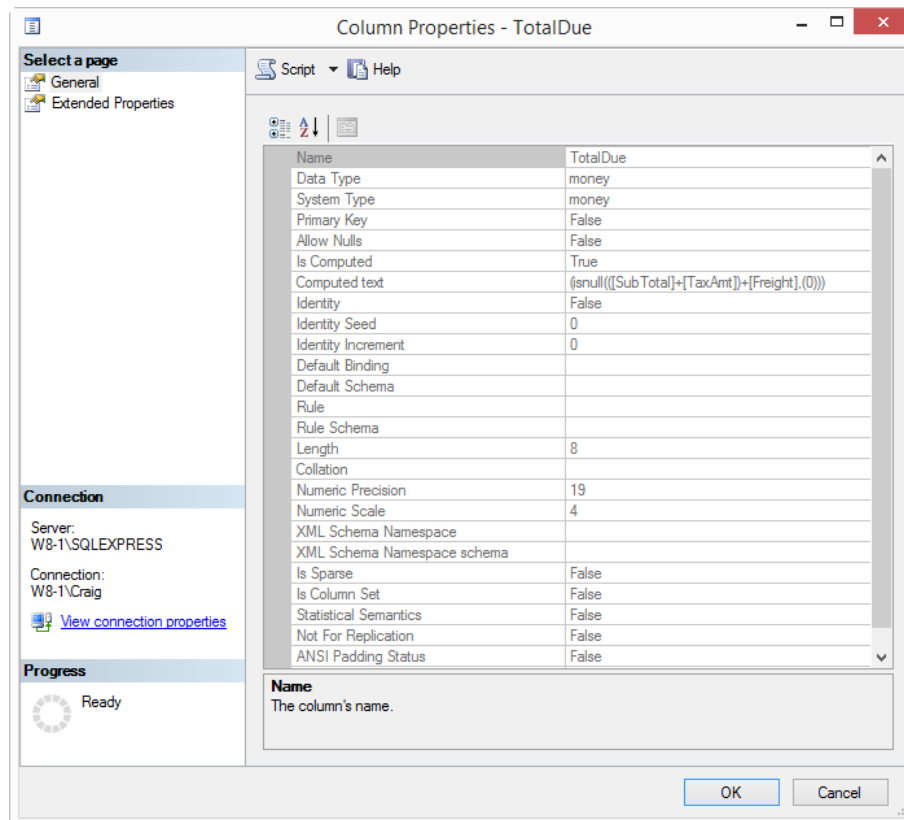


ssrsoth022

Figure 7: Right-click the TotalDue column, select the Properties item.

The **Column Properties** panel shown in Figure 8 is displayed. The **Computed text** property shows the definition of the column:

`(isnull(([Sub Total]+[TaxAmt])+[Freight] , (0)))`



ssrsoth023

Figure 8: The Column Properties panel shows the definition of the column in the Computed text property.

Using the computed text definition, the value of the `TotalDue` column is computed as the sum of the `SubTotal` column, the `TaxAmt` column and the `Freight` column. Those three columns are defined as **money** data types.

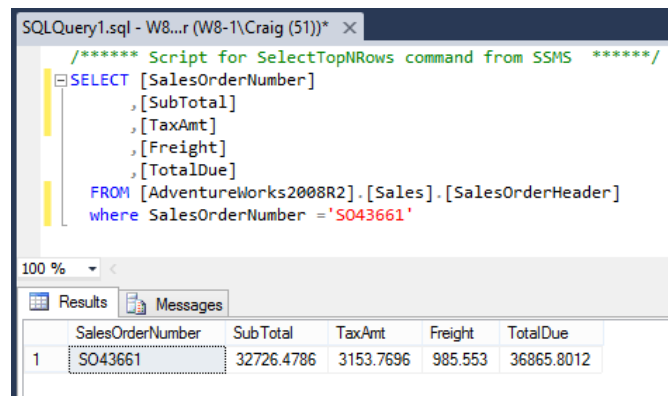
If the calculated value is null, the value 0 (zero) is used as the value of the `TotalDue` column.

Now run the following `SELECT` statement in the SQL Server Management Studio:

```
SELECT SalesOrderNumber, SubTotal, TaxAmt, Freight, TotalDue
FROM AdventureWorks2008R2.Sales.SalesOrderHeader
WHERE SalesOrderNumber = 'SO43661'
```

As shown in Figure 9, the column values are:

SubTotal	32726.4786
TaxAmt	3153.7696
Freight	985.553
TotalDue	36865.8012



ssrsoth031

Figure 9: Run the `SELECT` statement for the `SalesOrderNumber` to review the values .

So we see that the `TotalDue` amount is the amount that is reported on the Territory Sales report, and the amount shown in the `SubTotal` column is reported on the Sales Order Detail report.

You may want to track through the query that is used with the Sales Order Detail report (in the `salesorderdetail` dataset). It turns out that in the detail report, the `sales.salesorderdetail.LineTotal` amount is shown on each order detail line, and the report uses the `sum(LineTotal)` function to add up all of the `LineTotal` column values.

The `sum(LineTotal)` value does not include the `TaxAmt` and `Freight` amount, since those amounts are applied to the entire order, not to the detail lines.

So that explains why there is a difference in the totals. If the Sales Order Detail report was to be used in a production environment, it should be modified to show the "total" total, which would include the `TaxAmt` and `Freight` values.