

Add the IBM Provider as a Data Source in Visual Studio 2010

by Craig Pelkie

When you install Visual Studio 2010, the IBM .NET Data Provider (shipped with IBM i Access for Windows) does not show up in the Choose Data Source dialog (see Figure 1). Starting with the V6R1 version of the .NET Data Provider, it is possible to modify the Windows Registry so that the provider will appear in the list. In fact, IBM provides a download of the required registry entries for use with Visual Studio 2008 (see [Add the IBM Provider as a Data Source in Visual Studio 2008](#), My i-.NET July 2009, and [Update to IBM Provider as a Data Source in Visual Studio 2008](#), My i-.NET April 2010).

It does not look like IBM has yet made the update available for Visual Studio 2010, but Richard Schoen, of [RJS Software](#), has posted a freely available set of files that will make the required registry entries for Visual Studio 2010.

Go to <http://downloads.rjssoftware.com/files/commonclasses/dotnet/vs2010regiseries.exe> and download or run the file. When you run the file, it creates the temporary directory rjstemp and extracts the two .reg files shown in Figure 2.

To install the registry entries, you need to click on both of the .reg files. When you click a .reg file, you may be warned with a User Account Control message if you are using Windows Vista or Windows 7. Upon allowing the operation to proceed, you may get the Registry Editor warning message shown in Figure 3. Click Yes to continue and you'll get the message shown in Figure 4.

After installing both .reg files, close Visual Studio 2010 if it is open then restart it. You can now work with the IBM .NET Provider in the Choose Data Source dialog, as shown in Figure 5.

The entire process, from download to working with the provider, takes about 3 minutes. Special thanks to Richard for creating and posting the .reg files, and for making them freely available to programmers who are developing .NET applications for the IBM i.

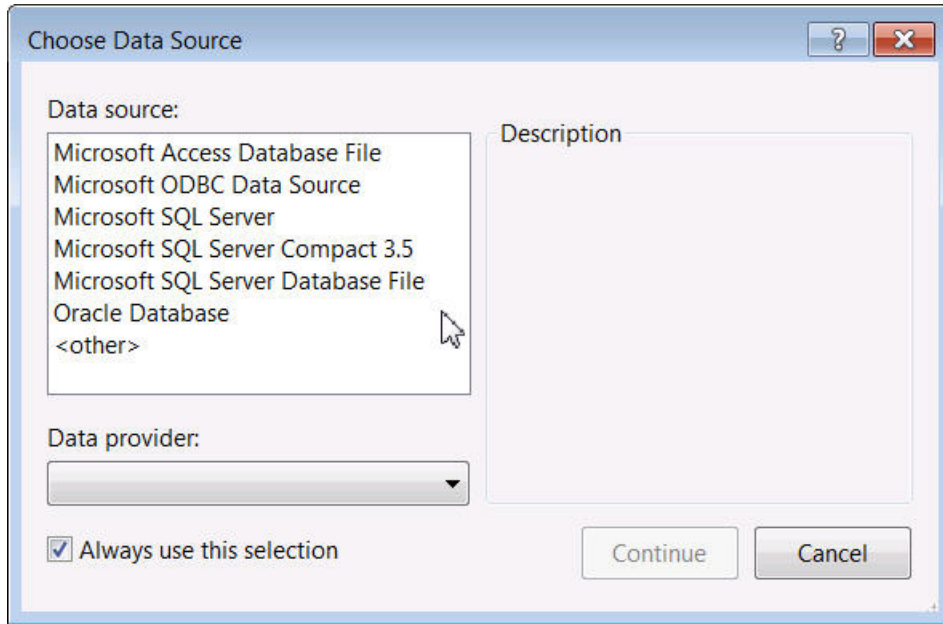


Figure 1: The Choose Data Source dialog, without the IBM .NET Provider.

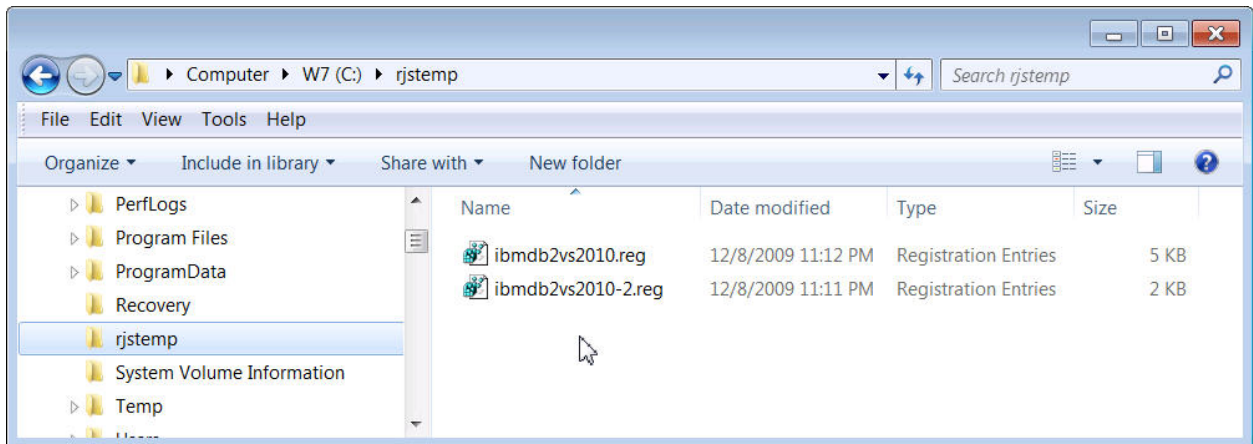


Figure 2: The RJSTEMP directory contains two reg files.

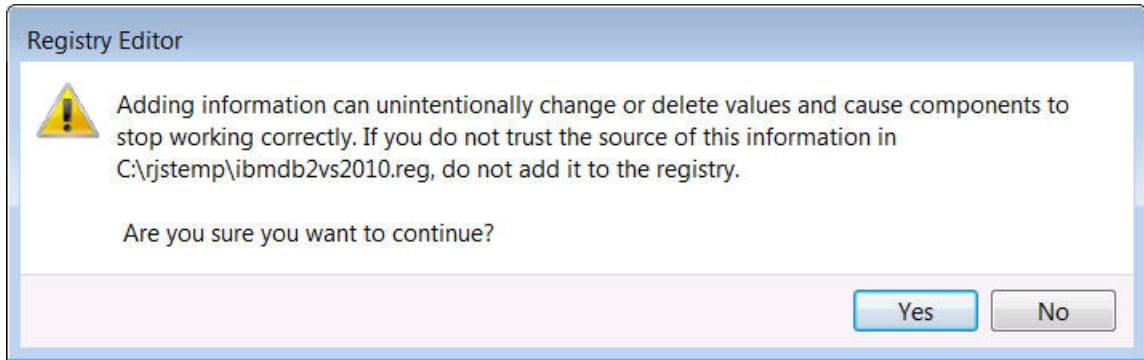


Figure 3: The warning message that is displayed before changing the registry.

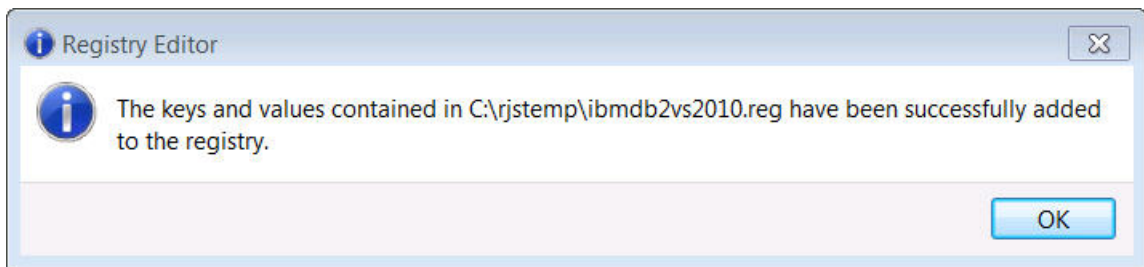


Figure 4: The completion message that is displayed.

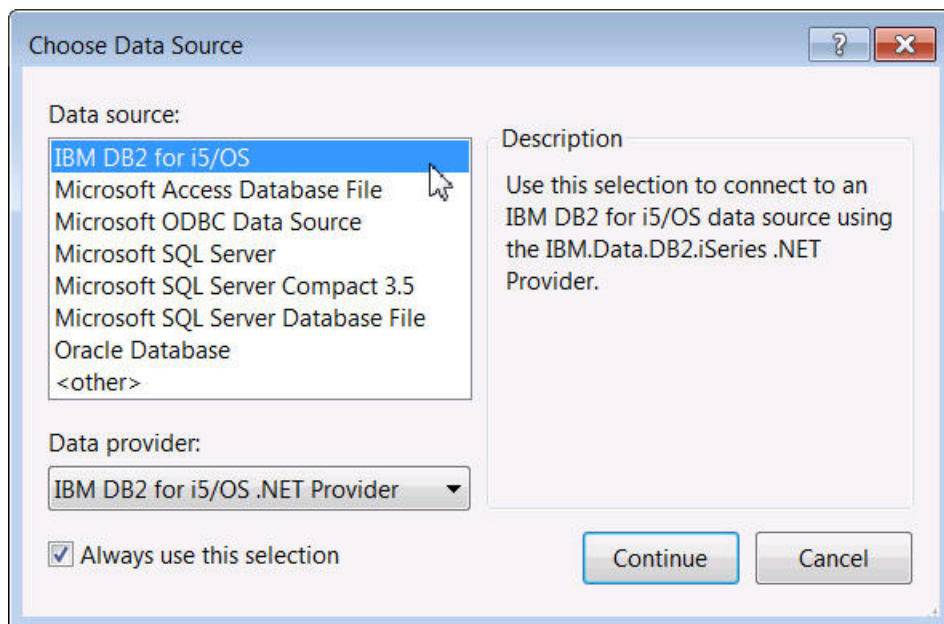


Figure 5: The IBM .NET Provider is now listed in the Choose Data Source dialog.