

# Verify System i Access for Windows features and initial setup (System i Access V6Rx)

The applications that you will develop in this course use features of the System i Access for Windows product. The components that you will use may include the following:

- Data Transfer To/From programs
- Data Transfer Excel Add-in
- System i Access ODBC driver
- System i Access OLE DB driver
- System i Access .NET Data Provider

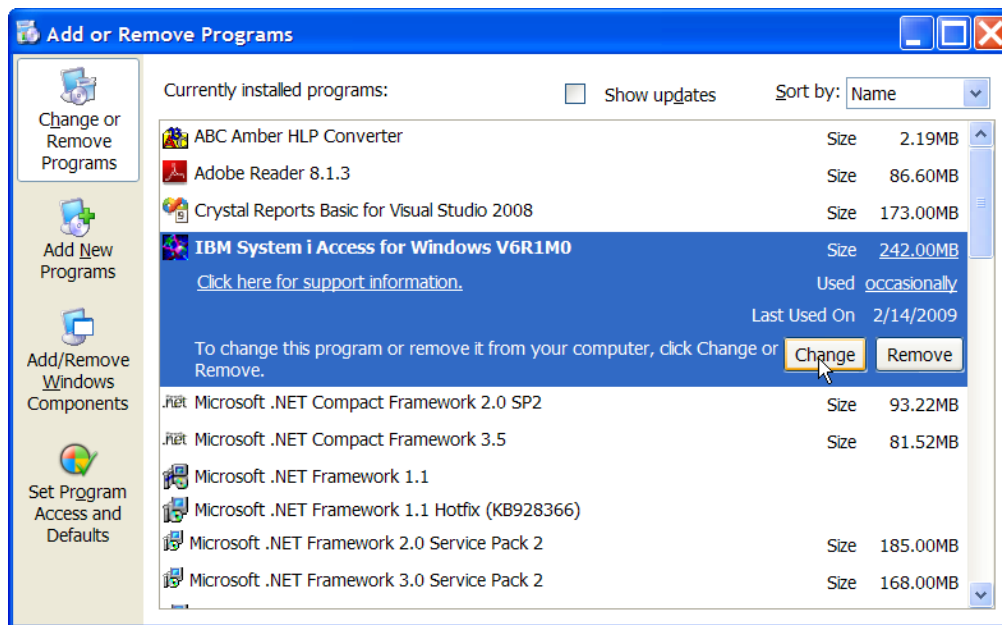
To work with the examples shown in this course, you need to verify that the System i Access components are installed. If the components are not installed, you will need to locate your System i Access install media and install the components.

Follow these steps to verify that you have the System i Access components installed on your PC.

## Verify PC features

— On your PC, go to the Control Panel and open the **Add or Remove Programs** program (Figure 1).

**Note:** Windows Vista refers to this program as **Programs and Features**.

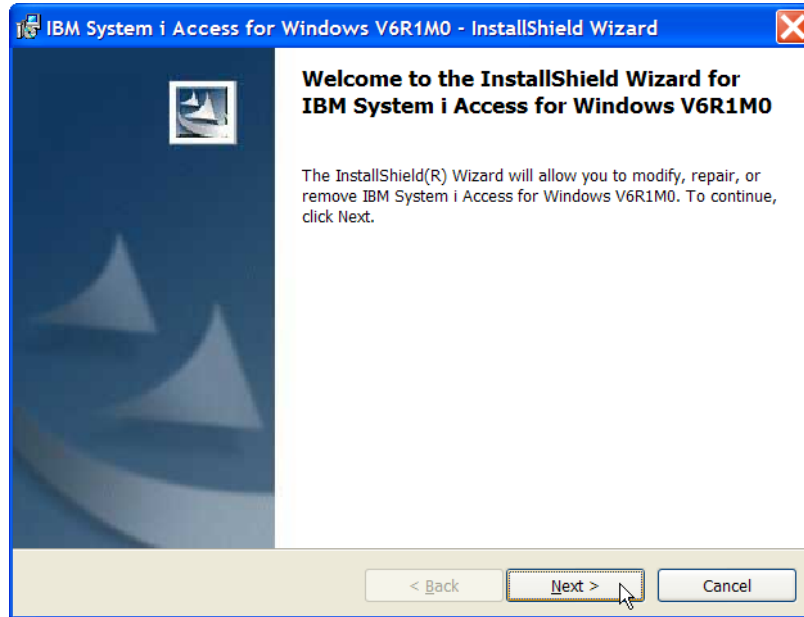


iacc001

Figure 1: Locate the System i Access for Windows program and click the Change button.

— Locate and click the **System i Access for Windows** item within the list of programs and click the **Change** button.

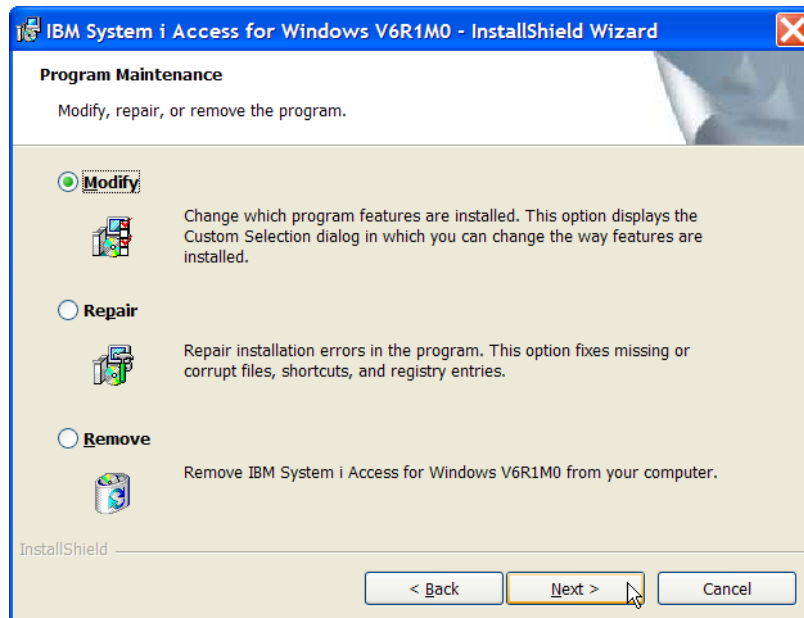
\_\_\_ The InstallShield Wizard panel shown in Figure 2 is displayed. Click the **Next** button.



iacc002

Figure 2: Click Next on the InstallShield Wizard panel.

\_\_\_ On the Selective Program Maintenance panel (Figure 3), select the **Modify** option, then click the **Next** button.

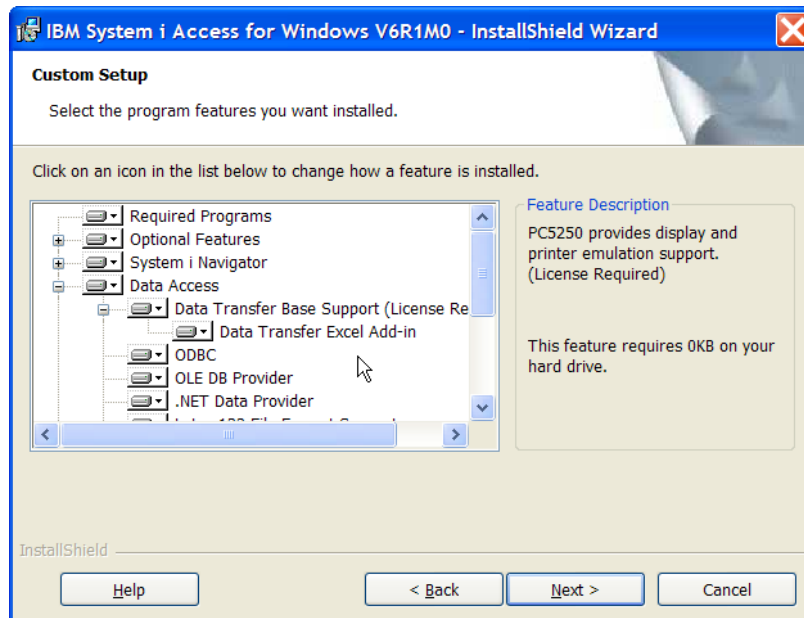


iacc003

Figure 3: Select the Modify option and click the Next button.

— You will see the subcomponents of the Data Access option, as shown in Figure 4. Verify that the following subcomponents are installed:

- Data Access
  - Data Transfer and all of its subcompents (if your company is licensed to use this component). The Excel Add-in is a subcomponent of Data Transfer.
  - ODBC
  - OLE DB Provider
  - .NET Data Provider



iacc004

Figure 4: Expand the Data Access option. You will see the Data Transfer, ODBC, OLE DB Provider and the .NET Data Provider subcomponents.

— If all of the components that you need are installed, you can click the **Cancel** button. You will see the confirmation message shown in Figure 5. Click the **Yes** button to end the InstallShield Wizard. You will see the final panel shown in Figure 6.

— If some of the subcomponents that you need are not installed, click the subcomponent in the Custom Setup panel (Figure 4) and select the install option. Click the **Next** button to continue with the InstallShield Wizard to install the subcomponent.

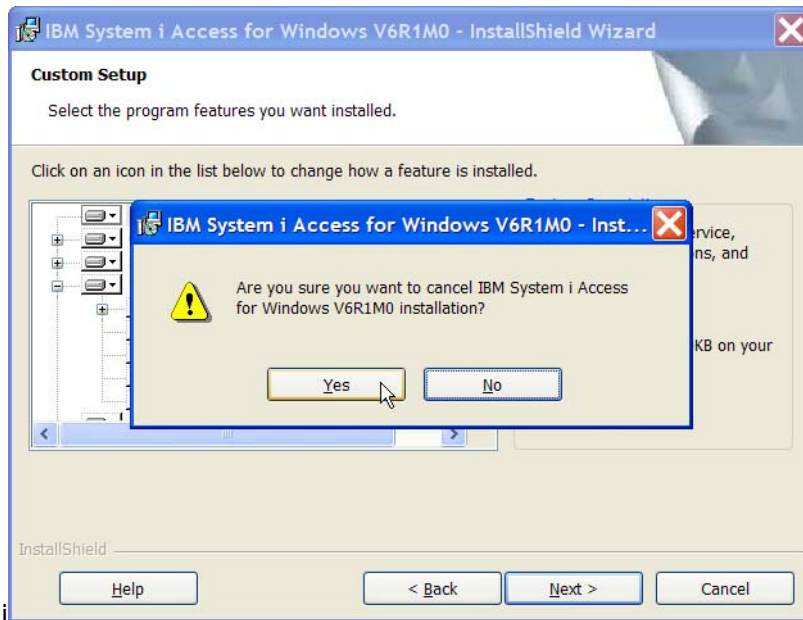


Figure 5: This cancel confirmation message is displayed when you cancel the InstallShield Wizard.

iacc005

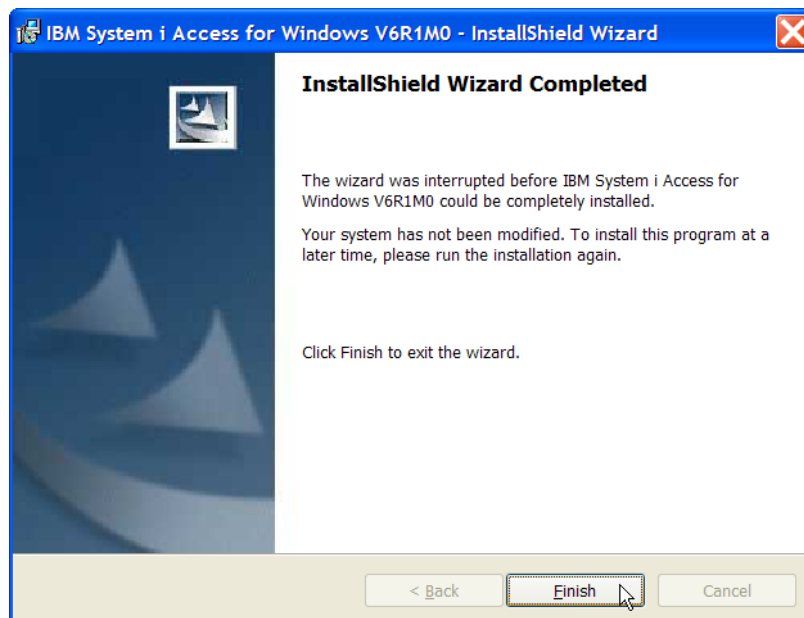


Figure 6: Click Finish to end the InstallShield Wizard.

iacc007

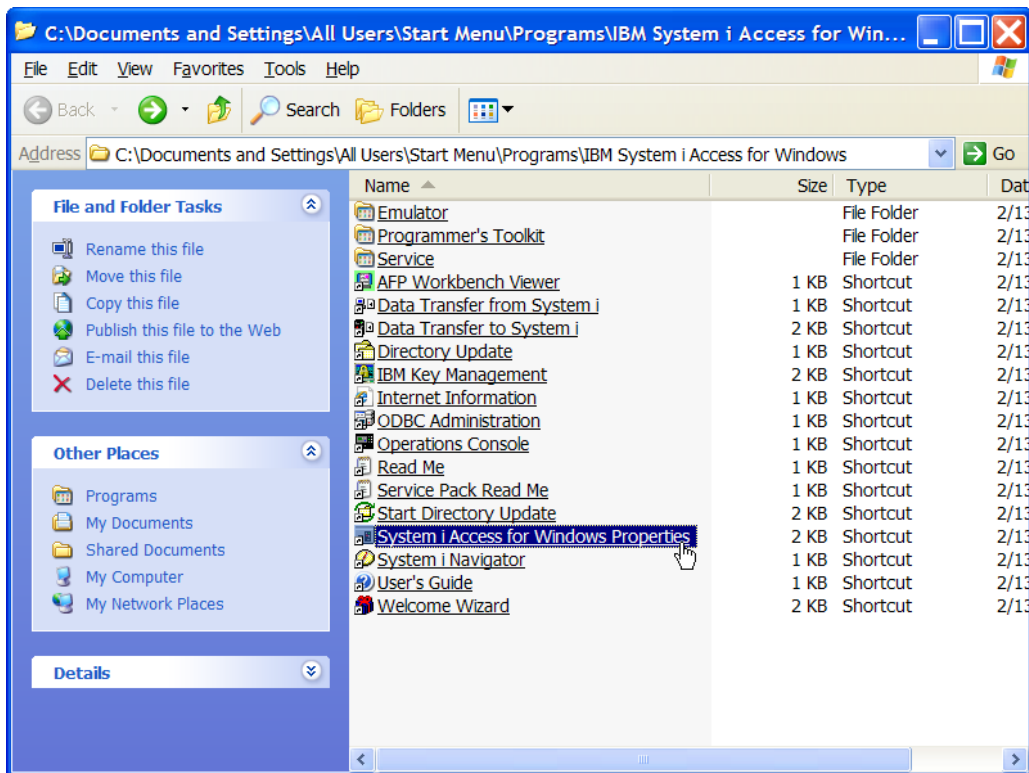
## Verify your System i Access Service Level

You need to ensure that the System i Access code installed on your PC is updated to the latest Service Level.

### Check the Service Level on your PC

Follow these steps to check your System i Access Service Level:

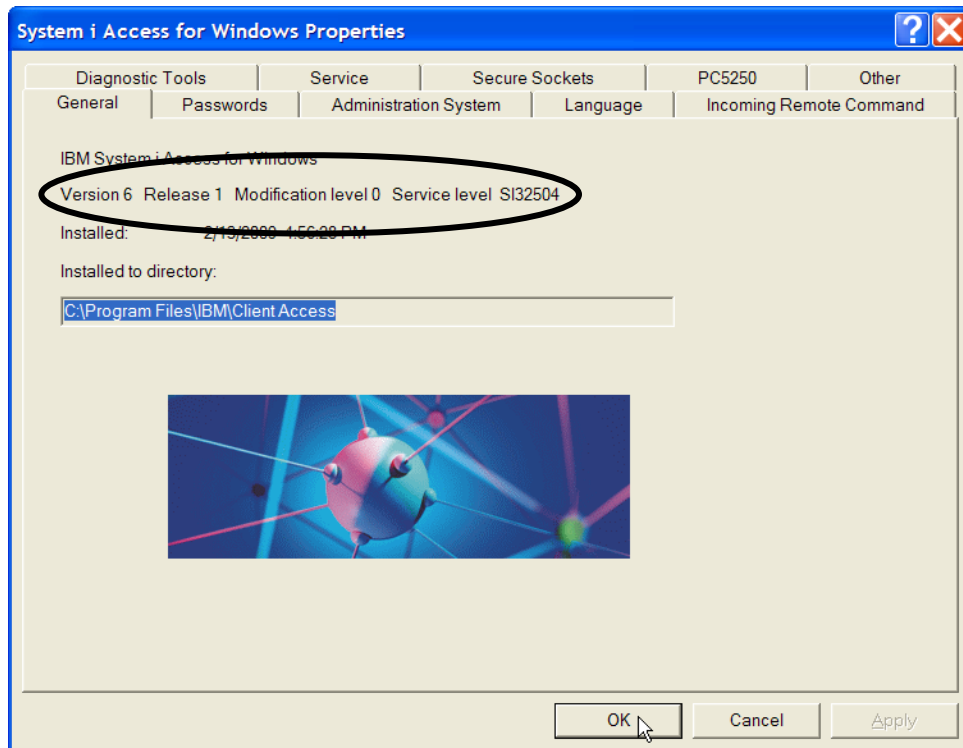
- \_\_\_ Go to the System i Access program group.
- \_\_\_ Locate and start the System i Access for Windows Properties program (Figure 7).



iacc011

Figure 7: Start the System i Access for Windows Properties program in the System i Access program group.

- \_\_\_ The System i Access Properties program opens (Figure 8). On the **General** tab, locate the section that lists:
  - The Version, Release and Modification Level
  - The Service levelof System i Access installed on your PC.



iacc012

Figure 8: The Service Level of the System i Access code on your PC is displayed in the General tab.

\_\_\_ When done, click the **OK** button to close the System i Access Properties program.

#### NOTE

The Version, Release and Modification level of System i Access on your PC does not have to be the same as your OS/400 VRM.

For example, you can use System i Access V6R1M0 on your PC to connect to an IBM i that is at OS/400 V5R4M0.

Another example: your PC might be at System i Access V5R3M0. You can use it to connect to an IBM i at OS/400 V6R1M0.

### Check the current Service Level from IBM

\_\_\_ Open a web browser and go to the following web site, as shown in Figure 9:

<http://www-03.ibm.com/systems/i/software/access/windows/casp.html>

\_\_\_ The System i Access Service Packs web page is displayed.

\_\_\_ On the web page, locate the section that is for your Release level. For example, if the release level displayed on the General tab (Figure 8) is Version 6, Release 1, Modification 0, look on the web page section for V6R1M0.

\_\_\_ Compare the service level installed on your PC (Figure 8) with the Latest Service Pack PTF Number displayed on the web page. If your service level is less than the web page, use the following instructions to download and install the latest Service Pack.

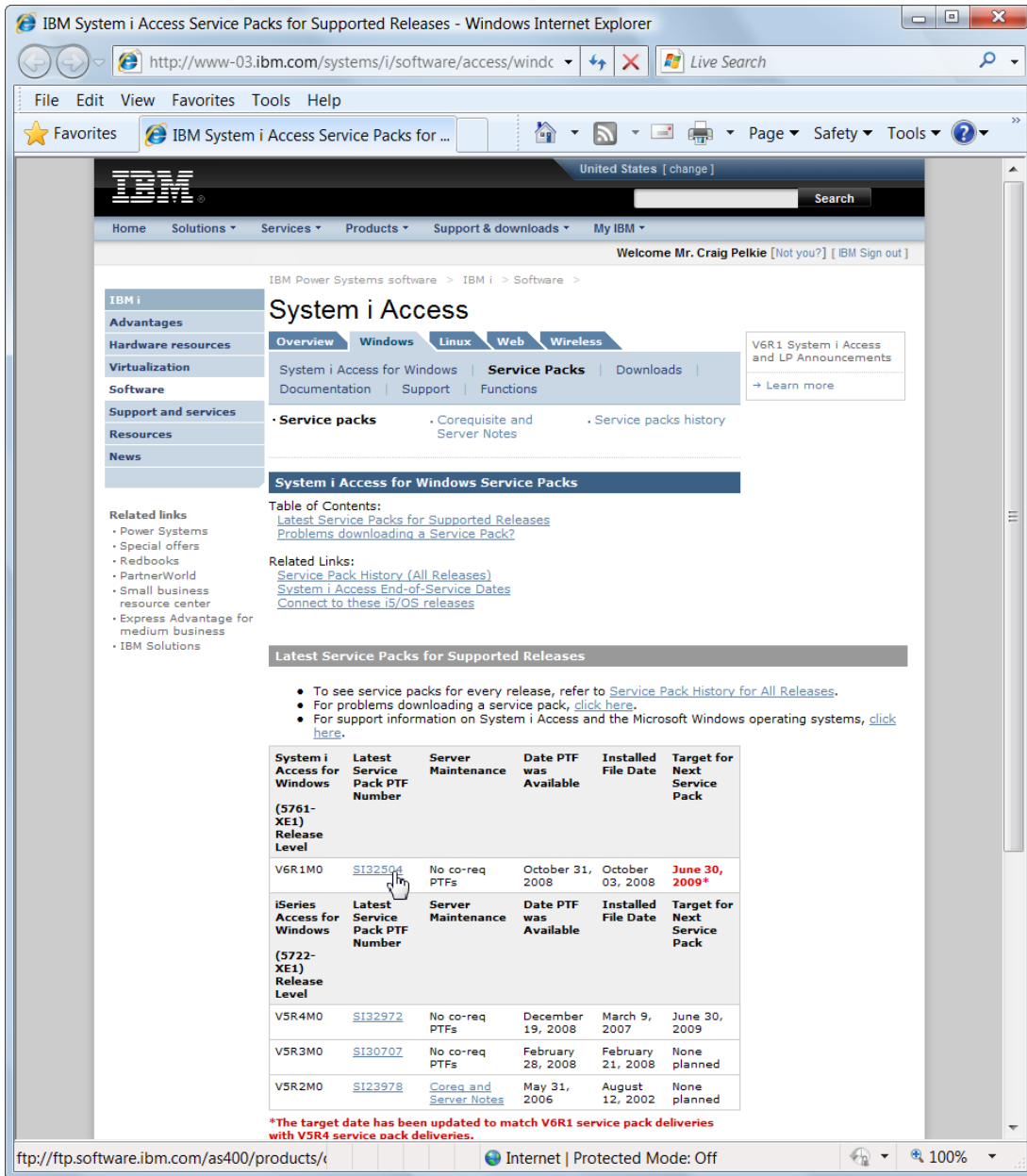


Figure 9: You can check the Service Pack number and availability at the System i Access Service Packs web site. iacc025

## NOTE

You cannot upgrade your version, release and modification level of System i Access by downloading and installing a Service Pack. Service Packs only update the Service Level for the VRM they are built for.

If you want to upgrade the VRM of System i Access for Windows on your PC, you need to use the System i Access for Windows install media to perform the upgrade. After upgrading, you need to install the Service Pack that is appropriate for the new VRM.

## Download a Service Pack from the IBM web site

Use the instructions in this section if you need to install the latest Service Pack for System i Access for Windows from the IBM web site.

- On the System i Access for Windows Service Packs web site (Figure 9), locate the current Service Pack link for your version of System i Access. **Be sure you select the correct version, you cannot install a Service Pack for a different version on your PC.**
- Click the Service Pack link. An FTP Listing page is displayed, as shown in Figure 10.

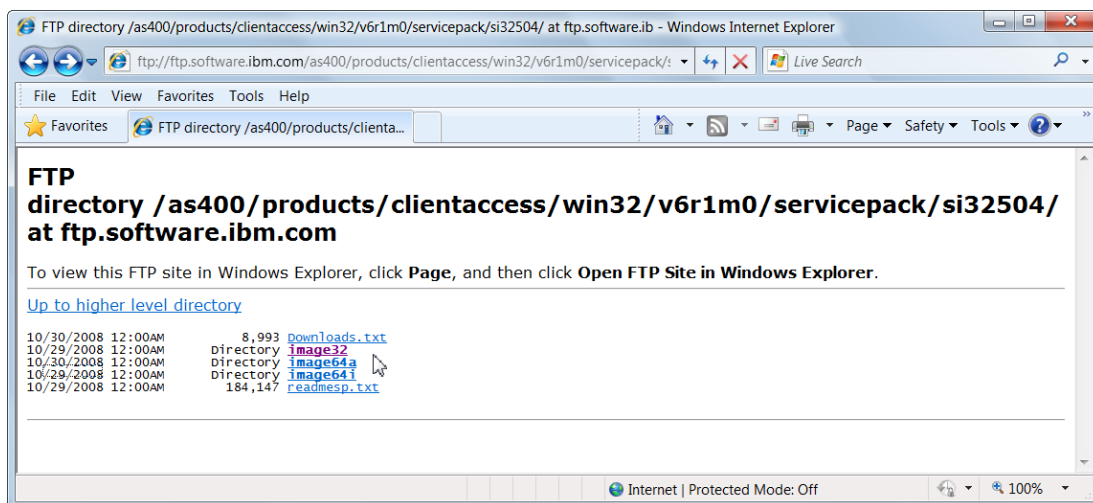
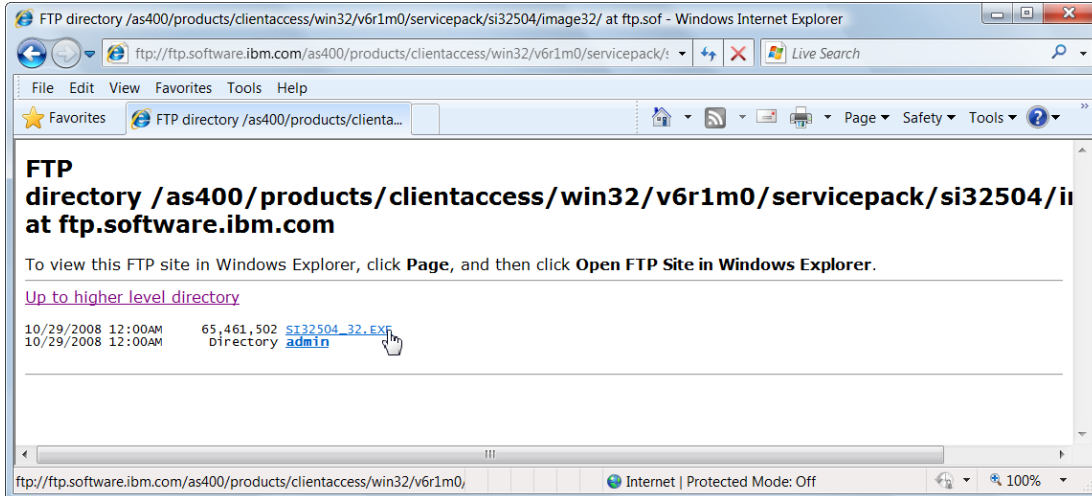


Figure 10: When you click a link to a Service Pack, an FTP listing is displayed.

iacc026

- On the FTP page, click the directory link for your PC:
  - **image32** – for 32-bit versions of Windows
  - **image64a** – for 64-bit versions of Windows on AMD64 and Intel 64-bit Xeon processors.
  - **image64i** – for 64-bit versions of Windows on Intel Itanium processors

\_\_\_ Figure 11 shows the FTP page that is displayed for the image32 link.

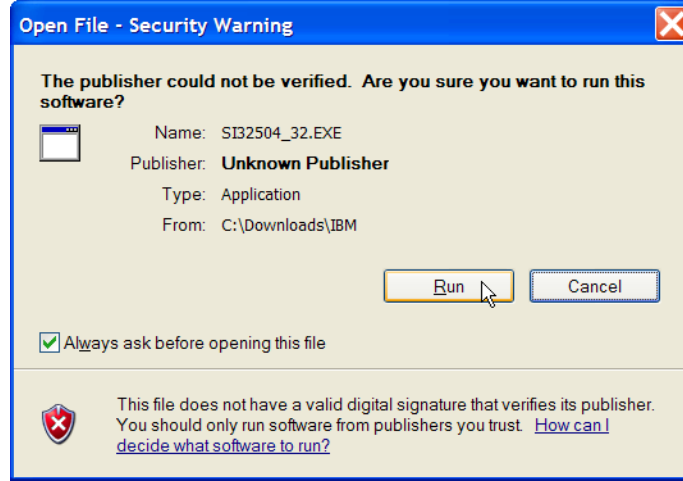


iacc0261

Figure 11: Right-click the EXE file link to save it to your PC.

- \_\_\_ The easiest way to update your PC's version of System i Access is to save the .EXE file to your PC and run it (it is a self-extracting executable). You may also want to download and view the readmesp.txt file, which describes the fixes in the service pack.
- \_\_\_ Right-click the .EXE file and click the **Save** option in the pop-up menu.
- \_\_\_ Before installing the System i Access Service Pack, you should end all open applications that are running on your PC. You are required to restart your PC before the Service Pack updates take effect.

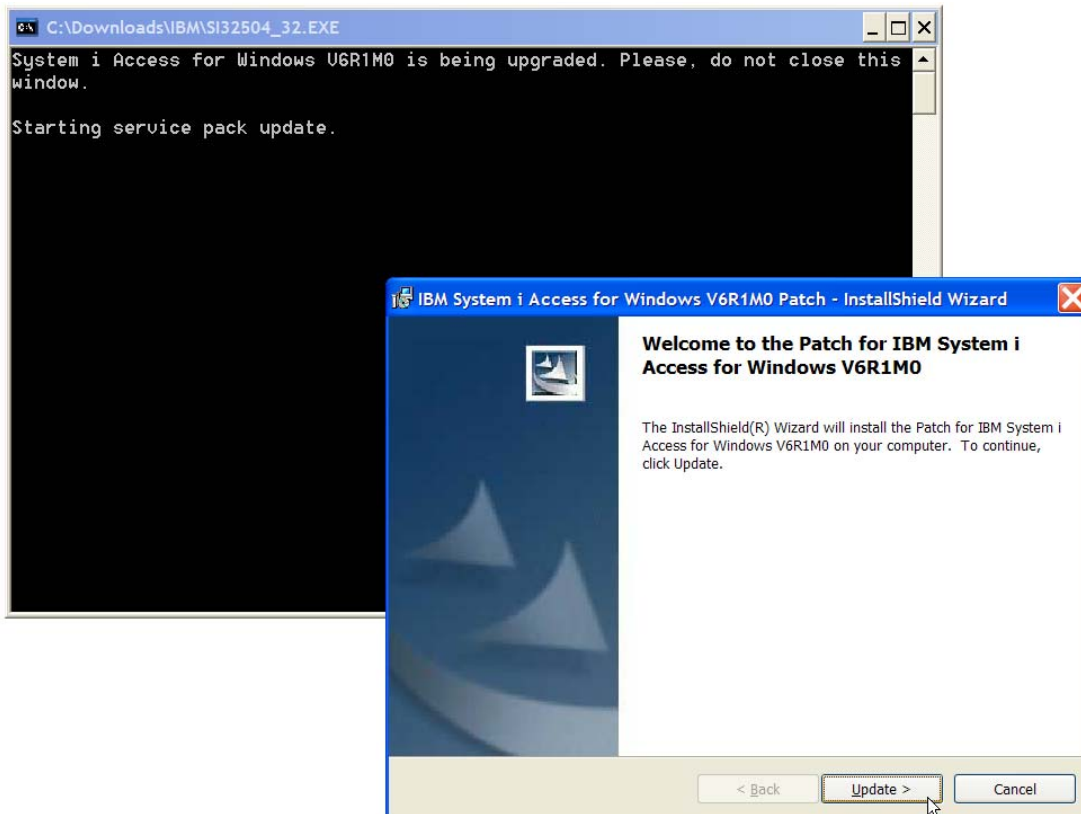
- After downloading the .EXE file, run it. The System i Access Service Pack installation program starts. Click the **Run** button on the Open File – Security Warning panel (Figure 12).



iacc027

Figure 12: Click the Run button to allow the Service Pack installation to proceed.

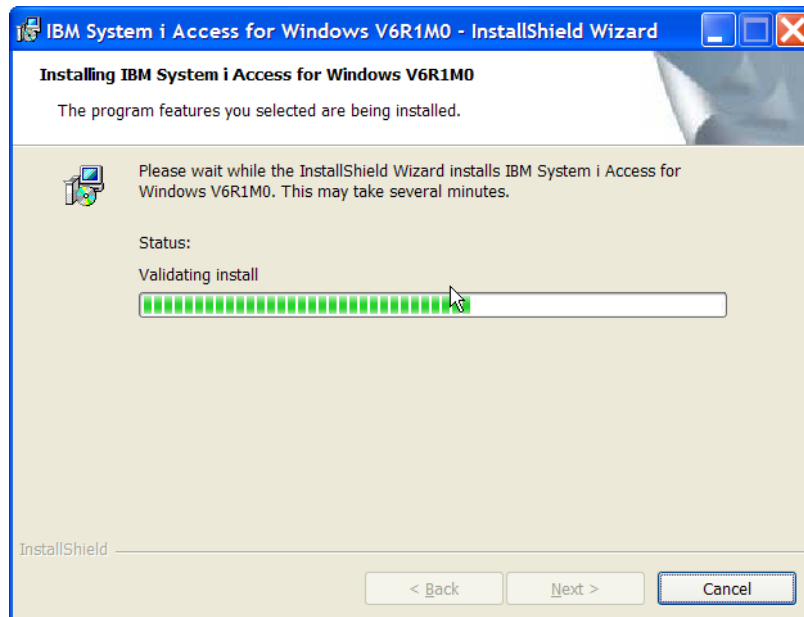
- A command prompt window opens and a Welcome panel is displayed, as shown in Figure 13. Click the **Update** button to continue the installation.



iacc028

Figure 13: Click the Update button to continue the installation.

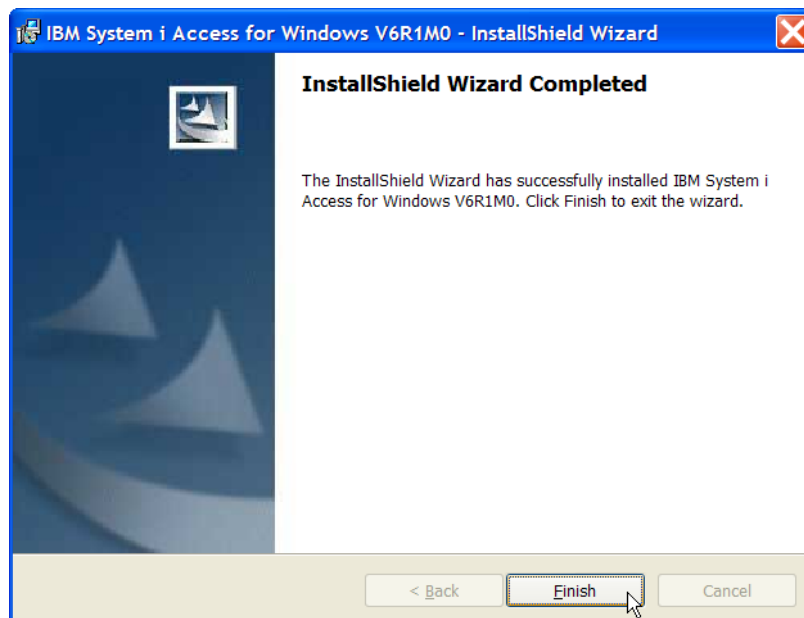
- The Service Pack installation program proceeds and displays a status message (Figure 14). The installation process may take several minutes.



iacc029

Figure 14: A progress message is displayed during the installation.

- When the installation is done, the panel shown in Figure 15 is displayed. Click the **Finish** button.



iacc030

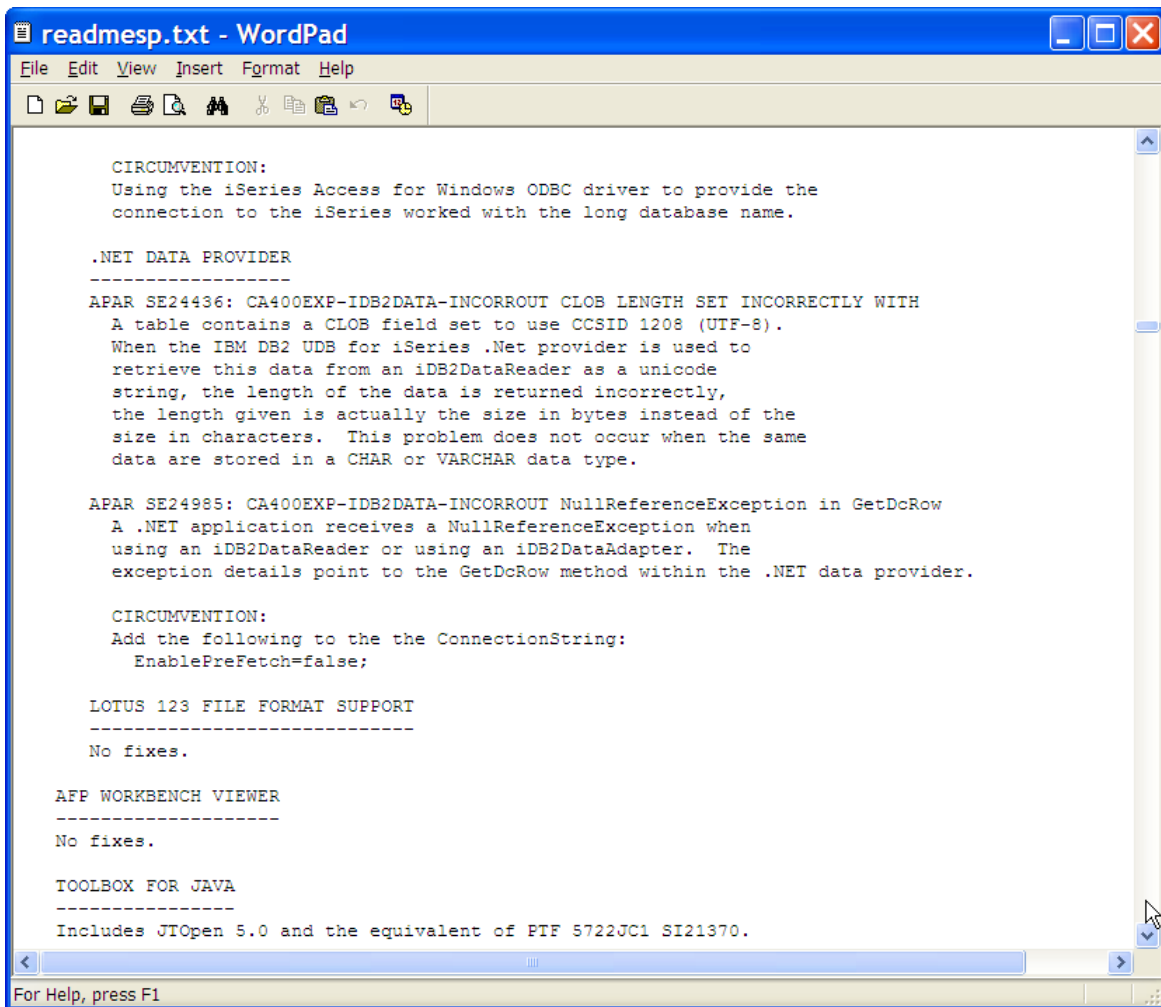
Figure 15: Click the Finish button to complete the Service Pack installation.

Figure 16 shows the READMESP.TXT file opened to the section that describes the fixes for the .NET Data Provider.

**In the future, when you need to resolve issues with Data Transfer, the IBM ODBC Driver, the IBM OLE DB Provider or the IBM .NET Data Provider, you should first look into the Service Pack README to determine if IBM has issued a fix that may apply to you.**

In the READMESP.TXT file, fixes are listed by Service Pack level. A Service Pack is cumulative and contains all of the previously issued Service Packs for the VRM of System i Access that the Service Pack applies to. Information about Service Packs is listed in the READMESP.TXT file with the current Service Pack listed first, then in reverse order as you go through the READMESP.TXT file.

You may find it worthwhile to go through the READMESP.TXT file and examine the various fixes that have been provided for the components that you are working with.



```
readmesp.txt - WordPad
File Edit View Insert Format Help
CIRCUMVENTION:
Using the iSeries Access for Windows ODBC driver to provide the
connection to the iSeries worked with the long database name.

.NET DATA PROVIDER
-----
APAR SE24436: CA400EXP-IDB2DATA-INCORROUT CLOB LENGTH SET INCORRECTLY WITH
A table contains a CLOB field set to use CCSID 1208 (UTF-8).
When the IBM DB2 UDB for iSeries .Net provider is used to
retrieve this data from an iDB2DataReader as a unicode
string, the length of the data is returned incorrectly,
the length given is actually the size in bytes instead of the
size in characters. This problem does not occur when the same
data are stored in a CHAR or VARCHAR data type.

APAR SE24985: CA400EXP-IDB2DATA-INCORROUT NullReferenceException in GetDcRow
A .NET application receives a NullReferenceException when
using an iDB2DataReader or using an iDB2DataAdapter. The
exception details point to the GetDcRow method within the .NET data provider.

CIRCUMVENTION:
Add the following to the the ConnectionString:
    EnablePreFetch=false;

LOTUS 123 FILE FORMAT SUPPORT
-----
No fixes.

AFP WORKBENCH VIEWER
-----
No fixes.

TOOLBOX FOR JAVA
-----
Includes JTOpen 5.0 and the equivalent of PTF 5722JC1 SI21370.

For Help, press F1
```

iacc031

Figure 16: The READMESP.TXT file, open to the section that describes fixes for the .NET Data Provider.